

Invisalign® Quick Start Guide. Pictures.

Dedicated to help you treat with confidence.



Patient photographic records.

Tips & Tricks – Extra-oral Photographs.

- Patient should stand against a white or lightly colored non-distracting background.
- Keep patient slightly away from the background to reduce shadows.
- Have patient close in maximum intercuspation.

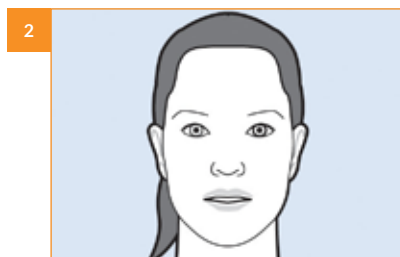
Materials Needed.

- Digital camera.

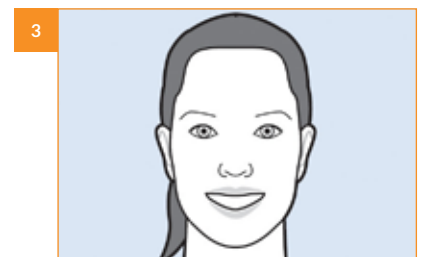
Procedure.



1 Right Profile.



2 Frontal Repose.



3 Frontal Smiling.

Tips & Tricks – Intra-oral Photographs.

- Eliminate all distractions in the field of view: saliva, lipstick, blood, etc.
- Include only teeth and surrounding gingival margins in photo (position camera, zoom).
- Using retractors, pull lip out of intraoral photo view.
- Mirrors can be placed in warm water to prevent fogging during use.

Materials Needed.

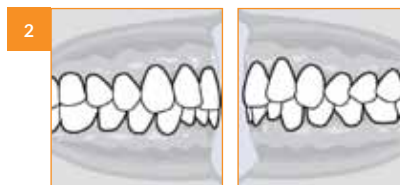
- Digital camera.
- Cheek Retractors.
- Photographic / Palatal Mirrors.
- Articulating Paper.

Procedure.



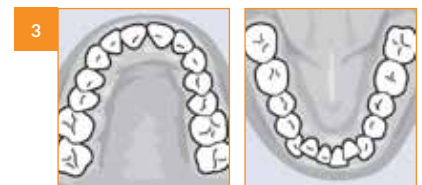
Anterior, Frontal.

- Maximize cheek retraction as patient bites down completely.
- Center midline; buccal surfaces of molars should be showing.



Buccal, Right and Left.

- Maximize exposure of the molar region by pulling retractor towards the ear.
- Capture molar/canine relationship; position camera perpendicular to buccal segment.



Occlusal, Upper and Lower.

- Recline chair and patient's head as far as possible; tilt patient's chin up (with mouth open).
- Mark occlusal contacts with articulating paper.
- Position occlusal mirrors at rear of terminal molar and opposite arch incisors.
- Center midline; take photo of image in mirror at 60° angle to mirror surface.

Align Technology BV

Arlandaweg 161
1043 HS Amsterdam
The Netherlands

United Kingdom: 0800 91 71 643
Other (English): +31 (0)20 586 3615

www.invisalign.co.uk

© 2014 Align Technology (BV). All Rights Reserved.
Invisalign®, ClinCheck® and SmartTrack®, among others, are trademarks
and/or service marks of Align Technology, Inc. or one of its subsidiaries or
affiliated companies and may be registered in the U.S. and/or other countries.

B10027-00 Rev A

